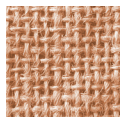


JUTE DRAWSTRING BAG - GJ035DS

Colour Ways

BARCODES:
50609463 ...



NATURAL
01253



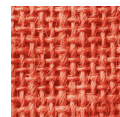
BLACK
01239



GREY
01246



TURQUOISE



ORANGE



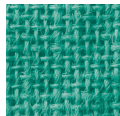
WHITE



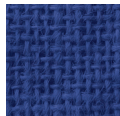
MAGENTA



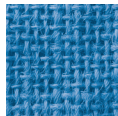
RED



GREEN



NAVY BLUE



ROYAL BLUE

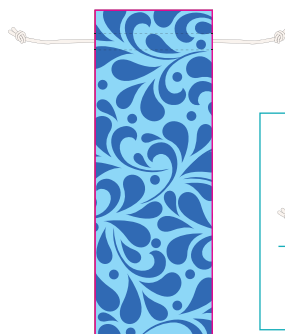
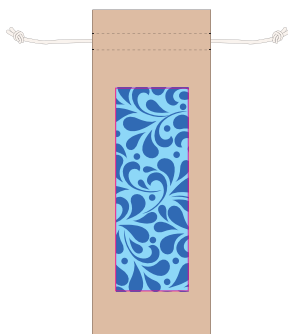
Product Visual

Dimensions:
W: 14.5 x H: 40 (cm)
W: 5.7 x H: 15.7 (inches)



UK Max Print Area:
W: 9 x H: 25 (cm)
W: 3.5 x H: 9.8 (inches)

Overseas Print Area:
Edge to Edge



Double cotton drawstring



15 x 14 weave
Unlined

Jute drawstring bags are a great way of packaging bottles of wine, coffee beans, monkey nuts, bird seed and much more. Perfect for displaying your product in a rustic and environmentally-friendly way.

There is an area large enough to be printed with your logo or branding message. Our team of designers are more than happy to help you with this.

Jute drawstring bags are particularly popular with breweries, cider farms, vineyards and distilleries.

Available in 11 colours

Bag Specifications

HS CODE: 4202 3290 10

Stock Code	Description	Litre Size	PCS / Carton	Carton Size	Gross Weight
GJ035DS Natural	Jute Drawstring Bag 14.5 x 40 (cm) 5.7 x 15.7 (inches)	5	100	45 x 45 x 15 (cm) 17.7 x 17.7 x 5.9 (inches)	5 kg
GJ035DS Dyed	Jute Drawstring Bag 14.5 x 40 (cm) 5.7 x 15.7 (inches)	5	100	45 x 45 x 15 (cm) 17.7 x 17.7 x 5.9 (inches)	5 kg



Made in India in our Sedex audited factory.
Sedex, the Supplier Ethical Data Exchange, is a membership organisation for business committed to continuous improvement of the ethical performance of their supply chains.

OEKO-TEX®
CONFIDENCE IN TEXTILES

